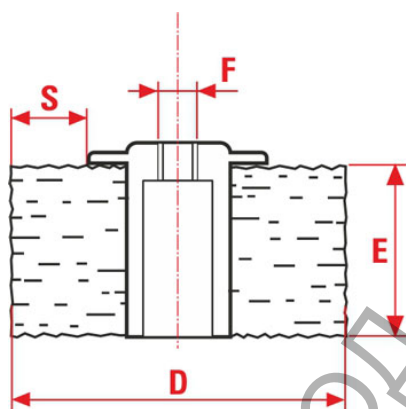


## Punched Roller RPA in Abrasive Nylon for Wood Processing



Punch Rollers in abrasive Nylon in different grits and wire diameter.

**Applications:** Ideal for the processing of wood, iron, stone, marble, and for every kind of surfaces, also irregular ones.

D	ART	F	E	Ø mm	WIRE	MAX RPM	Box	REF
140	RPA	M14	50	1,6	Abrasive Nylon CS Gr 46	1200	1	3240
140	RPA	M14	50	1,5	Abrasive Nylon CS Gr 60	1200	1	3241
140	RPA	M14	50	1,4	Abrasive Nylon CS Gr 80	1200	1	3242
140	RPA	M14	50	1,1	Abrasive Nylon CS Gr 120	1200	1	3243
140	RPA	M14	100	1,6	Abrasive Nylon CS Gr 46	1200	1	3244
140	RPA	M14	100	1,5	Abrasive Nylon CS Gr 60	1200	1	3245
140	RPA	M14	100	1,4	Abrasive Nylon CS Gr 80	1200	1	3246
140	RPA	M14	100	1,1	Abrasive Nylon CS Gr 120	1200	1	3247

### Special Brushes for Brushing Machines

SIT makes specific custom brushes for wood and parquet. These brushes are designed together with the customer depending on the level of finishing requested and the type of brushing machine used.

## Video showing brushing action using Brushing Machines

Video showing Wood Processing with brushes of different types and different filaments. Brushes for Makita satin finishing machines, Brushes for grinders and brushes for drill, in abrasive nylon, iron and brass-plated iron. The video shows how the choice of the brush determines, depending also on the wood, the desired type of finishing...

Video of the Brushing of a block of painted metal. A Makita brushing machine using a brush in crimped steel wires. These brush combo can easily remove paint and rust from metal, concrete and wood...

Video of the Brushing of a wall with a graffiti. In this action SIT brushes prove themselves to be effective in the removal of murals, and wall paintings of any kind without damaging the wall. Try to believe!